



# MBScope E300V2 Change Log

## v1.2.1 February 12, 2016

- Bug 1868: Service Panel – Fixed access for license level permissions

## v1.2.0 February 5, 2016

### Major Features:

- Feature 981: Configuration Viewer – Initial Release
- Feature 921: Parameter Loader – Addition of MBCSI files
- Feature 1006: Parameter Loader – SPV and DSP now Store to Flash when sending parameters
- Feature 975: Analyzer & Service Panel – Support for ONO export
- Feature 922: Service Panel – Added Touch and Go

### Bugs & Smaller Features:

- Feature 1007: Calibration Tool - When choosing triangular distortion method, it is not possible to choose the shape between sine and triangular waveform
- Bug 1630: Orbits - API/Clearance Limits - Available for Currents and Requests
- Bug 1636: Calibration Tool - Error writing INI file
- Bug 1637: Configuration Panel - does not support 64-bit
- Bug 1726: Configuration Panel - Encrypted PEF not supported
- Bug 1749: Service Panel - Offsets not saved into permanent memory
- Bug 1752: Calibration - API Display Limits – incorrect
- Bug 1811: Configuration Viewer - Some sections missing
- Bug 1823: Configuration Panel - NTW files not working
- Bug 1834: Analyzer - Unable to display open loop and closed loop at the same time
- Bug 1836: PL606 - Configuration Panel - Bug fixed for the unbalance FSV
- Bug 1837: PL577 - Configuration Panel - Display the rotor status for all panels
- Bug 1838: PL517 - Add new event for the maintenance key
- Bug 1839: PL610 - Configuration Panel - Add Touch & Go for axial
- Bug 1840: PL609 - Configuration Panel - Add new DO management for rotor rotation in the Configure Hardware View
- Bug 1841: PL612 - Event Viewer - Add units in the bar description for Alarm Snapshot & MBCSI LF Trending
- Bug 1842: PL611 - Event Viewer - Save the MBCSI event log
- Bug 1843: PL611 - Event Viewer - Save the SDR files & Low Frequency files in text format
- Bug 1844: PL612 - Event Viewer - Display the magnitudes & the phases for the SDR & Low frequency data
- Bug 1859: Service Panel - Choosing template with sinewaveform, triangular waveform gets driven by DSP

If you require technical support please contact us at the following:

Email: [magnetic.bearings@skf.com](mailto:magnetic.bearings@skf.com)

Phone: +1 403 232 9292

[www.skfmagneticbearings.com](http://www.skfmagneticbearings.com)



**v1.1.0      December 16, 2015**

- Bug 1096: Orbits – An exception occurred if the manual radius entry was too large
- Bug 1114: Firmware Loader – An exception occurred if no file was selected to send
- Bug 1115: Calibration Panel – An exception occurred if the step size entry was too large
- Bug 1646: Calibration Panel – Unable to auto-calibrate
- Bug 1692: E300V2 label in the status bar is in the wrong place
- Bug 1694: Configuration Panel – Exception when launched
- Bug 1712: Configuration Panel – Exception when sending the scaling factor
- Feature 902: Added build information to all output files
- Feature 988: Added Encryption to all MBScope files (encrypted files have a '#' appended)
- Feature 328: Added API display limits to the Snapshots, Orbits, Analyzer, and Calibration tools
- Feature 718: Moved all user files from "C:\Program Files\" to "C:\ProgramData\"
- Feature 930: Added a new Logging Options and Logging Export feature(Figure 1)
- Feature 931: Added a better UI for importing MDLs and PEFs (Figure 2)

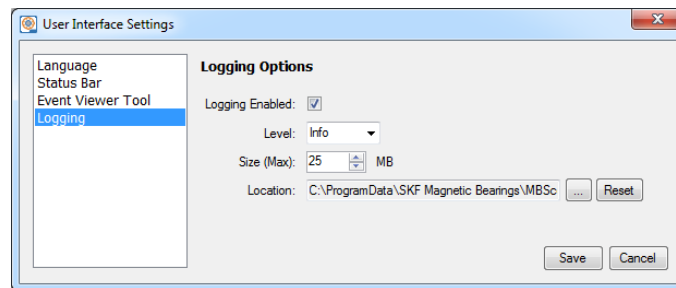


Figure 1 - Logging Options Feature (via the User Interface Settings)

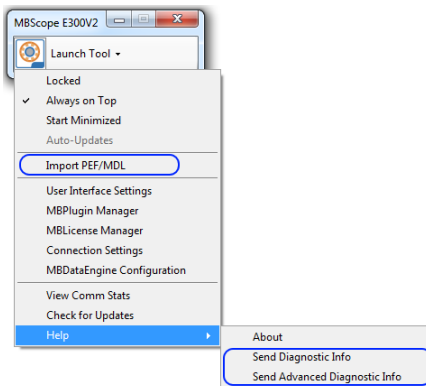


Figure 2 – Send diagnostic & logging information, and Import PEF/MDL features (via the Launcher)

If you require technical support please contact us at the following:

Email: [magnetic.bearings@skf.com](mailto:magnetic.bearings@skf.com)  
 Phone: +1 403 232 9292  
[www.skfmagneticbearings.com](http://www.skfmagneticbearings.com)

### **v1.0.7      November 12, 2015**

- Bug 1564: Configuration Panel – Fixed issues with data boxes not accepting and clearing data entered by user after sent to the controller
- Bug 1565: Firmware Loader – Fixed issue where the SPV image won't be sent to the controller
- Bug 1514: Service Panel – Fixed issue where a change in the output folder from the Transfer Functions Tab crashes the tool.
- Bug 1568: Service Panel – Fixed issue that does not allow calibration of Z axis when multiple axes are selected in template
- Bug 1573: Event Viewer – Improved the display for Hard/Soft landing counters
- Bug 1593: Control Panel – Added display for temperatures not available
- Bug 1594: Configuration Panel – Added dropping of shaft and writing to SPV during rotation and Improved the AO configuration display.

### **v1.0.6      September 25, 2015**

- Bug 1362: Installation – Changed 'Params' folder to 'Param'
- Bug 1339: Installation – Upgrading deleted the PEF folder
- Bug 1138: Snapshots – Fixed issues with horizontal scaling in spectrum view
- Bug 1304: Snapshots – Snapshots Start/Stop button has incorrect text when pressing 'Single'
- Bug 1248: Control Panel – Fixed exception when opening the monitoring panel
- Bug 1283: Calibration Tool – Fixed Store to Flash issues
- Feature 763: Event Viewer – Added a new event for 'Counter Reset'
- Feature 768: Event Viewer – Added a new event for 'Battery Unplugged'
- Feature 764: Event Viewer – Added a new event and alarm for 'Battery Life'
- Feature 765: Event Viewer – Improve display of the SPV SDR
- Feature 766: Event Viewer – Add a new tab to display LF data from MBCSI
- Feature 765: Event Viewer – Add a new tab to display the event saved in the MBCSI
- Feature: Upgraded the Math Calculation Library

### **v1.0.5      August 21, 2015**

- Bug 1284: Service Panel – Failed detection when switching axis
- Bug 1282: Service Panel – Fixed output file name for transfer function tab
- Bug 1300: Firmware Loader – Removed the requirement for admin privileges
- Feature 703: Installation – Addition of 'Params' folder in MBScope root directory

If you require technical support please contact us at the following:

Email: [magnetic.bearings@skf.com](mailto:magnetic.bearings@skf.com)  
Phone: +1 403 232 9292  
[www.skfmagneticbearings.com](http://www.skfmagneticbearings.com)

**v1.0.4      July 15, 2015**

- Bug 1211: Analyzer Tool – Fixed channel naming in ANL file data header
- Bug 1213: Calibration Panel – Fixed the display of an error during some configurations
- Bug 1214: Service Panel – Fixed an error message that sometimes occurred at the end of a measurement with a template, and fixed the sometimes missing open loop display.
- Bug 1231: Event Viewer – Small operational fixes
  - Added battery unplug events
  - Added event for maintenance key timeout
  - Removed display of axis that are not available in the machine

**v1.0.3      July 2, 2015**

- Bug 1197: Configuration Panel – Clear the Calibration Save after DSP Store to Flash
- Bug 1186: MBPlugin Manager Icon is incorrect
- Bug 1147: Misplaced text on the installer screen

**v1.0.2      June 17, 2015**

- Bug 1141: Small operational fixes
  - Configuration Panel: Fixed the entry of detection threshold for SPV Overspeed
  - Configuration Panel: Delete temporary files after use
  - Firmware Loader: Fixed which file types are displayed when browsing for MBCSI files
- Bug 1146: MBPlugin Manager was missing from the Start Menu and Launcher

**v1.0.1      June 5, 2015**

- Bug 1098: Memory leak during MBC reconnection process
- Bug 1106: Calibration Panel - Corrected the cross weight equation
- Bug 1109: Configuration Panel & Control Panel - Small operational fixes
- Bug 1111: Fixed project build issues

**v1.0.0      May 29, 2015**

Baseline Release

If you require technical support please contact us at the following:

Email: [magnetic.bearings@skf.com](mailto:magnetic.bearings@skf.com)  
Phone: +1 403 232 9292  
[www.skfmagneticbearings.com](http://www.skfmagneticbearings.com)