



MBScope E300V2 Change Log

v1.3.0 July 22, 2016

- Feature 1084: Trending – FFT View for TSD files
- Feature 1104: Added Bearing Voltage Estimation real time channels to the Snapshot, Trending and Event Viewer tools
- Feature 1144: Added a R/W mode to the Configuration Viewer
- Feature 1159: [S2M] PL60: Configuration Panel – Configure Bearing Characteristics
- Feature 1171: [S2M] [S2M] PL650: Configuration Panel – Properly display the 1st or 2nd order bearing filter dialog
- Feature 1180: [S2M] PL639: Allow to save the SDR file and LR file directly. Possibility to open a SDR file or LR file recorded in the PC.
- Feature 1228: [S2M] PL574: Modify the labels of events for the Power Supply
- Feature 1230: [S2M] PL652: Control Panel – Display of harmonic rank
- Feature 1238: [S2M] PL660: Add new Enum to read the rank of the harmonic
- Bug 1817: Memory leak during reconnection process, when not able to connect
- Bug 2092: Trending – Cursor shouldn't be a waiting glass in the Triggered/Collected box
- Bug 2093: Trending – When channels have decimation, the duration time of the sample is wrong.
- Bug 2185: Trending – Icon is incorrect
- Bug 2215: Calibration Panel – Auto Centering does not update DAC_OFFSET1 parameters
- Bug 2216: [S2M] PL648: Config Panel – Modify the label for the Elongation in the Configuration Hardware view
- Bug 2270: [S2M] PL652: Control Panel – Improve the display for the harmonics
- Bug 2286: [S2M] PL651: Event file in MBCSI are not downloading
- Bug 2307: Trending – Some channels at the end of the list cannot be displayed
- Bug 2269: Analyzer – Unable to open V6 files
- Bug 2310: Analyzer – Unable to open V7 files
- Bug 2311: Calibration Panel – The centering parameters are not updated into the centering Position Offset block of SPV
- Bug 2312: Event Viewer – Cannot open SDR when offline
- Bug 2061: Trending – Disconnect does not work (Unhandled Application Exception)
- Bug 2064: Parameter Loader – Missing User's Guide in Help menu

If you require technical support please contact us at the following:

Email: magnetic.bearings@skf.com

Phone: +1 403 232 9292

www.skfmagneticbearings.com



v1.2.2 May 6, 2016

- Feature 1037: Analyzer - Opens several files in one shot
- Feature 1036: Analyzer - Export only direct transfer functions
- Bug 1946: Update to MBLicense v5.1.1 to fix the 'changing PCID' issue
- Bug 2040: Trending Tool - Y value not display in the cursor tool tiup when HHMMSS time format selected
- Bug 1939: Snapshots - SSD files are not scaling correctly
- Bug 2034: Snapshots - Saving Amplifier Current SSD causes an OutOfIndexArrayException
- Bug 1907: Snapshots - Label "Position Z1" rename to "Position Z"
- Bug 1942: Service Panel - Power time date format has hours and seconds swapped
- Bug 2039: Service Panel - Levitation counter not updating
- Bug 1961: Service Panel - Date Time Bug Fix
- Bug 2038: Analyzer - Multiple Selection not working
- Bug 1940: Analyzer - Avoid exporting empty transfer functions
- Bug 2036: PL625 - Configuration Panel - Some views are in error when not connected
- Bug 1972: PL622 - Control Panel - Display the Harmonics information from DSP Control Panel
- Bug 1971: PL621 - Configuration Panel - Manage the command for automatic auto batteries test
- Bug 1974: PL604 - Firmware Loader - SPV firmwareload without having another panel opened
- Bug 1973: PL574 - Event Viewer - Events for PCS modified
- Bug 1868: Service Panel - Fixed access for license level permissions

v1.2.1 February 12, 2016

- Bug 1868: Service Panel - Fixed access for license level permissions

v1.2.0 February 5, 2016

Major Features:

- Feature 981: Configuration Viewer - Initial Release
- Feature 921: Parameter Loader - Addition of MBCSI files
- Feature 1006: Parameter Loader - SPV and DSP now Store to Flash when sending parameters
- Feature 975: Analyzer & Service Panel - Support for ONO export
- Feature 922: Service Panel - Added Touch and Go

Bugs & Smaller Features:

- Feature 1007: Calibration Tool - When choosing triangular distortion method, it is not possible to choose the shape between sine and triangular waveform
- Bug 1630: Orbits - API/Clearance Limits - Available for Currents and Requests
- Bug 1636: Calibration Tool - Error writing INI file
- Bug 1637: Configuration Panel - does not support 64-bit
- Bug 1726: Configuration Panel - Encrypted PEF not supported
- Bug 1749: Service Panel - Offsets not saved into permanent memory
- Bug 1752: Calibration - API Display Limits - incorrect

If you require technical support please contact us at the following:

Email: magnetic.bearings@skf.com

Phone: +1 403 232 9292

www.skfmagneticbearings.com

- Bug 1811: Configuration Viewer - Some sections missing
- Bug 1823: Configuration Panel - NTW files not working
- Bug 1834: Analyzer - Unable to display open loop and closed loop at the same time
- Bug 1836: PL606 - Configuration Panel - Bug fixed for the unbalance FSV
- Bug 1837: PL577 - Configuration Panel - Display the rotor status for all panels
- Bug 1838: PL517 - Add new event for the maintenance key
- Bug 1839: PL610 - Configuration Panel - Add Touch & Go for axial
- Bug 1840: PL609 - Configuration Panel - Add new DO management for rotor rotation in the Configure Hardware View
- Bug 1841: PL612 - Event Viewer - Add units in the bar description for Alarm Snapshot & MBCSI LF Trending
- Bug 1842: PL611 - Event Viewer - Save the MBCSI event log
- Bug 1843: PL611 - Event Viewer - Save the SDR files & Low Frequency files in text format
- Bug 1844: PL612 - Event Viewer - Display the magnitudes & the phases for the SDR & Low frequency data
- Bug 1859: Service Panel - Choosing template with sinewaveform, triangular waveform gets driven by DSP

If you require technical support please contact us at the following:

Email: magnetic.bearings@skf.com
Phone: +1 403 232 9292
www.skfmagneticbearings.com

v1.1.0 December 16, 2015

- Bug 1096: Orbits – An exception occurred if the manual radius entry was too large
- Bug 1114: Firmware Loader – An exception occurred if no file was selected to send
- Bug 1115: Calibration Panel – An exception occurred if the step size entry was too large
- Bug 1646: Calibration Panel – Unable to auto-calibrate
- Bug 1692: E300V2 label in the status bar is in the wrong place
- Bug 1694: Configuration Panel – Exception when launched
- Bug 1712: Configuration Panel – Exception when sending the scaling factor
- Feature 902: Added build information to all output files
- Feature 988: Added Encryption to all MBScope files (encrypted files have a '#' appended)
- Feature 328: Added API display limits to the Snapshots, Orbits, Analyzer, and Calibration tools
- Feature 718: Moved all user files from "C:\Program Files\" to "C:\ProgramData\"
- Feature 930: Added a new Logging Options and Logging Export feature(Figure 1)
- Feature 931: Added a better UI for importing MDLs and PEFs (Figure 2)

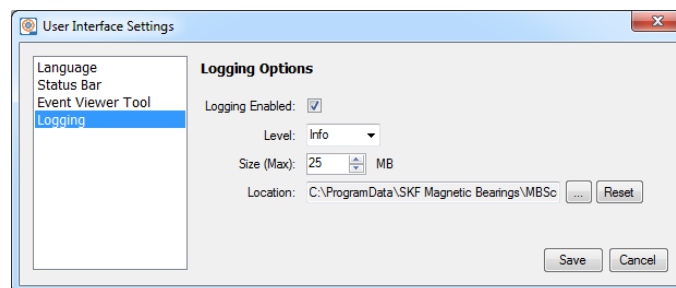


Figure 1 – Logging Options Feature (via the User Interface Settings)

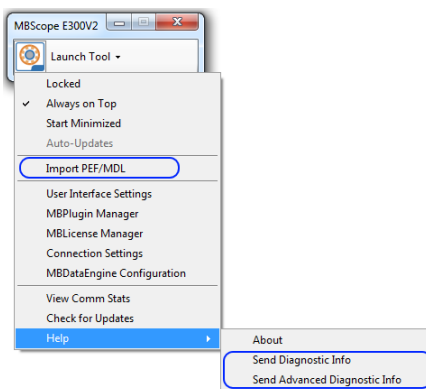


Figure 2 – Send diagnostic & logging information, and Import PEF/MDL features (via the Launcher)

If you require technical support please contact us at the following:

Email: magnetic.bearings@skf.com
Phone: +1 403 232 9292
www.skfmagneticbearings.com

v1.0.7 November 12, 2015

- Bug 1564: Configuration Panel – Fixed issues with data boxes not accepting and clearing data entered by user after sent to the controller
- Bug 1565: Firmware Loader – Fixed issue where the SPV image won't be sent to the controller
- Bug 1514: Service Panel – Fixed issue where a change in the output folder from the Transfer Functions Tab crashes the tool.
- Bug 1568: Service Panel – Fixed issue that does not allow calibration of Z axis when multiple axes are selected in template
- Bug 1573: Event Viewer – Improved the display for Hard/Soft landing counters
- Bug 1593: Control Panel – Added display for temperatures not available
- Bug 1594: Configuration Panel – Added dropping of shaft and writing to SPV during rotation and Improved the AO configuration display.

v1.0.6 September 25, 2015

- Bug 1362: Installation – Changed 'Params' folder to 'Param'
- Bug 1339: Installation – Upgrading deleted the PEF folder
- Bug 1138: Snapshots – Fixed issues with horizontal scaling in spectrum view
- Bug 1304: Snapshots – Snapshots Start/Stop button has incorrect text when pressing 'Single'
- Bug 1248: Control Panel – Fixed exception when opening the monitoring panel
- Bug 1283: Calibration Tool – Fixed Store to Flash issues
- Feature 763: Event Viewer – Added a new event for 'Counter Reset'
- Feature 768: Event Viewer – Added a new event for 'Battery Unplugged'
- Feature 764: Event Viewer – Added a new event and alarm for 'Battery Life'
- Feature 765: Event Viewer – Improve display of the SPV SDR
- Feature 766: Event Viewer – Add a new tab to display LF data from MBCSI
- Feature 765: Event Viewer – Add a new tab to display the event saved in the MBCSI
- Feature: Upgraded the Math Calculation Library

v1.0.5 August 21, 2015

- Bug 1284: Service Panel – Failed detection when switching axis
- Bug 1282: Service Panel – Fixed output file name for transfer function tab
- Bug 1300: Firmware Loader – Removed the requirement for admin privileges
- Feature 703: Installation – Addition of 'Params' folder in MBScope root directory

If you require technical support please contact us at the following:

Email: magnetic.bearings@skf.com
Phone: +1 403 232 9292
www.skfmagneticbearings.com

v1.0.4 July 15, 2015

- Bug 1211: Analyzer Tool – Fixed channel naming in ANL file data header
- Bug 1213: Calibration Panel – Fixed the display of an error during some configurations
- Bug 1214: Service Panel – Fixed an error message that sometimes occurred at the end of a measurement with a template, and fixed the sometimes missing open loop display.
- Bug 1231: Event Viewer – Small operational fixes
 - Added battery unplug events
 - Added event for maintenance key timeout
 - Removed display of axis that are not available in the machine

v1.0.3 July 2, 2015

- Bug 1197: Configuration Panel – Clear the Calibration Save after DSP Store to Flash
- Bug 1186: MBPlugin Manager Icon is incorrect
- Bug 1147: Misplaced text on the installer screen

v1.0.2 June 17, 2015

- Bug 1141: Small operational fixes
 - Configuration Panel: Fixed the entry of detection threshold for SPV Overspeed
 - Configuration Panel: Delete temporary files after use
 - Firmware Loader: Fixed which file types are displayed when browsing for MBCSI files
- Bug 1146: MBPlugin Manager was missing from the Start Menu and Launcher

v1.0.1 June 5, 2015

- Bug 1098: Memory leak during MBC reconnection process
- Bug 1106: Calibration Panel - Corrected the cross weight equation
- Bug 1109: Configuration Panel & Control Panel - Small operational fixes
- Bug 1111: Fixed project build issues

v1.0.0 May 29, 2015

Baseline Release

If you require technical support please contact us at the following:

Email: magnetic.bearings@skf.com
Phone: +1 403 232 9292
www.skfmagneticbearings.com