



# MBScope E300V2 Change Log

## v1.5.1 March 2, 2018

### Minor Features:

- Feature 3303: Event Viewer: Added 2 event ID tags. 6030: CU1 indicates rotation without direction and 6031: Machine stopped.
- Feature 1755: Launcher: Updated error message when a license is not loaded

### Bugs:

- Bug 3294: Control Panel – Alarm Panel: Fixed repeated and missing label. “Env TP over” label is repeated and “Env TP under” is missing
- Bug 3295: Control Panel – Battery Test Option: Battery 2 date is not updated correctly. Bat 2 date is equal to Bat 1 date
- Bug 3297: OEM Config Panel: Exception when opening Network Configuration tab when controller is disconnected
- Bug 3268: Control Panel: Not scaling correctly when 125% font size selected
- Bug 3312: Factory Configuration Panel – Configure Hardware Panel: Group boxes in HIO tab not displaying correctly
- Bug 3296: MBScope E300V2 uninstaller does not fully remove all files from Program Files directory
- Bug 3301: Control Panel: Axial harmonic H1Z value is not correct
- Bug 3300: Control Panel – Monitoring Panel: Axial harmonic values are different from the main Control Panel
- Bug 3302: Snapshots: Axial Harmonic channels group missing H1 channel
- Bug 3315: Event Viewer: Not parsing H1Z axial harmonic channel
- Bug 3321: Event Viewer: Not auto-scaling properly after zoom in
- Bug 3326: Orbits: Plotter hidden when resizing window
- Bug 3320: Firmware Loader: Sometimes fails to send executable files to MBCSI
- Bug 3250: MBInstaller header not translated

## v1.5p.0 December 14, 2017

### Major Features:

- Feature 1446: Trending - Low Speed Preview Window Improvements
- Feature 1672: Added support for language localization; provided French translations for all tools
- Feature 1486: Analyzer - ONO Viewer Integration
- Feature 1588: [EV44] OEM Config Panel - MODBUS Addresses Tab & Servicing and MODBUS
- Feature 1583: [EV38] Trending, Snapshot, Event Viewer, Control Panel, Data Engine - Support for new harmonic channels and harmonic rank display

### Minor Features:

- Feature 1537: Update the error message dialog box to use the new “Email to SKF” feature
- Feature 1667: Service Panel - Block the Clearance check function if system is in rotation
- Feature 1655: Parameter Loader - When only connected to one target, only send the parameters of that target (without an error message)
- Feature 1465: OEM Config Panel - Rename ‘Config Viewer’ to ‘OEM Config Panel’
- Feature 1641: Data Engine - PEF v2.17 support (addition of new events)
- Feature 1680: Control Panel - User Interface Performance Improvements
- Feature 1683: Control Panel - Battery Test Management to ensure test is not requested when form is closed
- Feature 1654: [EV47] Analyzer - File naming convention
- Feature 1585: [EV45] OEM Configuration Panel - Addition of the Overspeed Detection Threshold

If you require technical support please contact us at the following:

Email: [magnetic.bearings@skf.com](mailto:magnetic.bearings@skf.com)

Phone: +1 403 232 9292

[www.skfmagneticbearings.com](http://www.skfmagneticbearings.com)



## Bugs:

- Bug 2908: Calibration - Use the user's "%temp%" folder rather than "C:\Windows\Temp"
- Bug 2766: Calibration - Offline Mode - Gives a "PVF does not contain MBSCOPE1 parameter" error
- Bug 3223: Calibration - Offline Mode - Exception when creating .cct files with 'Save Template to MBCSI' checked
- Bug 2694: Analyzer & Calibration - Double Clicking ANL, ANT, and CCT files does not open in the tool correctly
- Bug 2896: Analyzer - Offline Mode - Gives an error message on startup
- Bug 3159: Analyzer - Unable to open some ANL files (especially TSD files generated by Analyzer)
- Bug 3254: Analyzer - To modify File prefix information, mouse cursor needs to be on the box to permit the text modification
- Bug 3079: Trending - Slow speed settings are not getting saved when closing/opening the form
- Bug 2334: Trending - Waits for trigger on a slow speed trend when a trigger is not selected
- Bug 3075: Trending - UriFormatException on startup sometimes
- Bug 3121: Trending - Duration options greyed out after switching from 'High Speed', 'Post' to 'Low Speed'
- Bug 3256: Trending - Data from previously captured TSD copied into a later TSD
- Bug 2895: Trending & Event Viewer - Zoom Bar will disappear at the edge in FFT view when first opened
- Bug 3103: Event Viewer - Exception when selecting Zoom or Auto-Scale options from Tools menu on the LF Trending Tab
- Bug 2945: Event Viewer - Extracted data is flat-lined
- Bug 2927: Data Engine - Unhandled NullReferenceException when the MBCSI sends an incomplete response
- Bug 2983: Data Engine - Improved the refresh time for the parameters for Bearing Voltage calculation
- Bug 3253: Data Engine - Improve the connection time when the MBCSI is not connected
- Bug 3076: All Tools - MBC system time in the status bar was not showing correct time (was off by the local timezone)
- Bug 3151: Snapshots - FFT Resolution Options are missing when switching from Snapshots to Waterfall
- Bug 3255: Snapshots - Previous SSD file with spectrum format cannot be open in offline mode
- Bug 3155: Signal Generator - Error message on startup when in offline mode
- Bug 3125: Service Panel - Help > Quick Help button does nothing and should be removed
- Bug 3246: Service Panel - Exception when loading .cct and .ant files in Offline Mode
- Bug 3153: Service Panel - Cannot load centering template
- Bug 3118: Service Panel - cannot load template file
- Bug 3221: Parameter Loader - Unable to send a PVFz file with a Certified License
- Bug 3107: Parameter Loader - Typo in error dialog box
- Bug 3163: Parameter Loader - Missing readback confirmation message
- Bug 3099: Parameter Loader - Certified License should be able to send PVFz# or PVF# & Factory license PVFz#, PVFz, PVF# and PVF
- Bug 3116: OEM Config Panel - Incorrectly allow access with lower license levels
- Bug 3205: OEM Config Panel - Failure reading files; access to temp directory denied
- Bug 3105: OEM Config Panel - 'Failed downloading alarm list from MBCSI' when not run as admin
- Bug 2667: Factory Config Panel - NullRefException in General Output Block
- Bug 3199: Factory Config Panel - Won't launch without auto-connect enabled
- Bug 3119: Launcher - EULA window does not display "OK" button (125% display setting)
- Bug 3117: Firmware Loader - File or Help menu items do not work
- Bug 3238: Control Panel - Quick Help button launches web page that doesn't load
- Bug 3276: Control Panel - Exception when not connecting to DSP
- Bug 2246: Control Panel Monitoring panel - Background is white

## v1.4.5      September 22, 2017

## Minor Features:

- Feature 1652: [PL209] Factory Configuration Panel - Add the "Browse" buttons in the Application Settings view to choose the MDL files

## Bugs:

- Bug 2944: Event Viewer - Unable to open a specific SDR due to an IniFileReaderException
- Bug 3094: [PL209] Factory Configuration Panel - Correction to the SPV Position Offset Calculation

If you require technical support please contact us at the following:

Email: [magnetic.bearings@skf.com](mailto:magnetic.bearings@skf.com)

Phone: +1 403 232 9292

[www.skfmagneticbearings.com](http://www.skfmagneticbearings.com)

- Bug 3095: [PL682] Event Viewer - Data is flatlined
- Bug 3092: Factory Configuration Panel - Problem with Hn filter configuration

#### v1.4.4 July 13, 2017

##### Bugs:

- Bug 2899: Observer Link Memory Leak – Fixed “Null Reference Exception” in the real-time data manager caused by computation of estimated voltages.

#### v1.4.3 May 5, 2017

##### Minor Features:

- Feature 1440: MBDataEngine, Snapshots, Trending and Event Viewer tools - Replaced Estimated Bearing Voltage channels by Estimated Amplifier Voltage channels
- Feature 1442: Parameter Loader - Removed the .NTW and .PTX files generated by the parameter loader
- Feature 1443: MBDataEngine - Added update of the CRC calculation when changing DSP and SPV parameters in Offline Mode
- Feature 1445: Installer – Execute the Digi-Connect installer when installing the CD
- Feature 1463: Parameter Loader - Updated progress bar to display parameter loader steps. Loading of parameters to each target (DSP, SPV and MBCSI) and store to flash progress for DSP and SPV targets
- Feature 1476: OEM Config. Panel - Added PT100 temperature offset calibration to the BNC Configuration tab and removed it from the General Information tab

##### Bugs:

- Bug 2830: Fixed exception thrown in Snapshots when a duplicate channel was added to the same snapshots window
- Bug 2878: Fixed Parameter Loader receive button not working when MBCSI parameters were selected
- Bug 2882: Fixed a configuration Panel problem where the wrong PEF will be selected when using a PVFz in Offline Mode
- Bug 2891: Fixed Estimated Amplifier Voltage calculation for axial axis in the MBDataEngine
- Bug 2892: Fixed Estimated Amplifier Voltage calculation for Z2 axis
- Bug 2894: Fixed navigator window in the Trending tool when the FFT view is active
- Bug 2904: Fixed final elongation calculation in the clearance tab of the Service Panel

#### v1.4.2 March 3, 2017

##### Minor Features:

- Feature 1358: Configuration Panel – (Offline Mode) Synchronize modifications to files stored in PVFz
- Feature 1436: Configuration Viewer - Separate out 'Send' and 'Stf' actions
- Feature 1444: Control Panel - Add display of the DSP and SPV checksums
- Feature 1364: [PL864] Event Viewer - ASD files improvement
- Feature 1434: [ID143] Add new MBCSI 'Starting' event

##### Bugs:

- Bug 2790: Support for Windows 100%/125%/150% Scaling
- Bug 2874: Calibration Tool and Service Panel - Store to Flash Fails
- Bug 2820: TSD & ASD files - the last line of data is not read
- Bug 2758: MBDE - Memory leak when cabinet is not connected, but plugin is trying to connect
- Bug 2779: MBDE - Snapshot frame detection is not detecting when the counter wrapped
- Bug 2780: MBDE - Snapshot start time was not getting sent to the plugin manager correctly
- Bug 2729: MBDE - Estimated bearing voltage calculation can fail & spam the log
- Bug 2803: MBScope Settings - The log level configuration did not work
- Bug 2822: [PL682] Event Viewer - Data issue in the ASR file
- Bug 2821: [PL683] Control Panel - Remove the high/low limit for unbalance display

If you require technical support please contact us at the following:

Email: [magnetic.bearings@skf.com](mailto:magnetic.bearings@skf.com)

Phone: +1 403 232 9292

[www.skfmagneticbearings.com](http://www.skfmagneticbearings.com)

- Bug 2866: [ID151] Event Viewer - Display the peak positions from the SDR file of SPV
- Bug 2867: [ID151] Configuration Panel - Disable parameters (excepted the clear auto) in the MBCSI parameter view in offline mode

## v1.4.1 Jan 13, 2017

### Minor Features:

- Feature 1351: Analyzer – Change the default injection parameters
- Feature 1352: Service Panel – Change the default naming convention
- Feature 1378: Configuration Panel – Change 'Min Clearance' display to a 'Mechanical Airgap' display instead

### Bugs:

- Bug 2691: Event Viewer – SDR save is not available
- Bug 2693: Service Panel – Decrypted files are not downloaded from MBCSI
- Bug 2721: Service Panel – Allow Certified Users to take transfer functions while rotating
- Bug 2697: Calibration Panel – Icons are huge and blurry
- Bug 2709: Trending Tool – TPL files should not save a default output folder
- Bug 2692: Configuration Viewer – Send to Controller Store to Flash function is not always working
- Bug 2651: Launcher – Update the Help > Send Diagnostic Info button
- Bug 2732: @Observer Link – Missing packet detection

## v1.4.0 Dec 21, 2016

### Major Features

- Feature 1232: Auto Connect on start option
- Feature 1197: Service Panel – Record Machine Status
- Feature 1203: Event Viewer – FFT View
- Feature 1233: Offline Mode with a PVFz
- Feature 1202: Service Panel & Analyzer - Include Rotation Speed Simulation option

### Minor Features

- Feature 1199: Service Panel & Analyzer – Option to include/exclude TSD data along with ANL data
- Feature 1198: Service Panel – Allow axis-by-axis levitation
- Feature 1200: Service Panel – Choose from a list of template files to use
- Feature 1196: Service Panel – Allow of certified users to modify the gains
- Feature 1367: Service Panel - Allow Certified Users to view the Open Loop TF
- Feature 1204: Parameter Loader – Include the PTX and NTW files
- Feature 1357: Parameter Loader - Add the 'Bearing\_Characteristics.DAT' file into the PVFZ
- Feature 1362: Configuration Viewer - Display of the centering compensation
- Feature 1373: Configuration Viewer –Allow access to this panel only for Certified Users
- Feature 1354: Signal Generator - Change the default injection frequency to 10Hz

### Bugs

- Bug 2668: Configuration Viewer - Ref Shift and Sens Gains modifications are not getting applied
- Bug 2676: Configuration Viewer - When sending all parameters, ensure levitation is off
- Bug 2683: Trending - Locking up when stopping the trend
- Bug 2685: Parameter Loader - Reference Shift and Sensitivity Gains modifications are not getting applied

If you require technical support please contact us at the following:

Email: [magnetic.bearings@skf.com](mailto:magnetic.bearings@skf.com)

Phone: +1 403 232 9292

[www.skfmagneticbearings.com](http://www.skfmagneticbearings.com)

- Bug 2681: Service Panel - Phase graph does not have the same operation as Analyzer (locked to +/-180deg)
- Bug 2689: Service Panel - Do not default/change TF selection when starting a sweep
- Bug 1740: Event viewer - No Dialog box to save SDR files
- Bug 2629: Analyzer - Injection Channels wrong when force injection point selected
- Bug 1750: Encryption - MDL files are not handled by encryption
- Bug 2096: Snapshots - FFT loses resolution when a snapshot is saved
- Bug 2097: Snapshots - When a Snapshots is opened (time domain) the spectrum option should be disabled.
- Bug 2291: Launcher - Remove 'update' buttons
- Bug 2299: Failed parameter queries are not caught by the MBDDataEngine
- Bug 2303: Trending - Even though the trend is complete, the Events will keep increasing and the Disk Space decrease.
- Bug 2337: E300V2 - Add support for Release Candidate Checking
- Bug 2338: Voltage Estimation - Axial calculation can be wrong due to invalid FSV
- Bug 2352: Licensing - Multiple license keys cause very slow loading.
- Bug 2378: Event Viewer: Moved custom display as utc option to the global UI interface
- Bug 2390: Event Viewer - Wrong Icon
- Bug 2463: Configuration Panel - Leaving and Reentering a tab will return "Changed" boxes back to the original color
- Bug 2626: Trending - Auto Scale does not work correctly with two Y Axis
- Bug 2631: Snapshots: Tool crashing when changing spectral estimation factor
- Bug 2636: Service Panel - Send Offset + StF does not store new offset values in DSP and SPV
- Bug 2646: Service Panel - Clearance Check via Inflection Method is not working for radial
- Bug 2653: Service Panel: Crash when opening a TF template with certified license
- Bug 2660: Configuration Viewer - Rename 'Oscillator Offsets Plane' to 'Reference Shift'
- Bug 2661: Configuration Viewer - Panel is not large enough to show all information on the Amplifier tab
- Bug 2662: Calibration Panel - Inflection Point method: Amp Cmd (%) limits should be restrained to 0 - 100%
- Bug 2663: Calibration Panel - Inflection Point method: Amp Cmd (%) limits are not respecting the manual axis settings
- Bug 2673: Config Viewer - Global Gain is not working
- Bug 2228: MBDE Exception - InvalidOperationException in RTDataManager
- Bug 2549: Machine Speed: Not updated in analyzer and ono files
- Bug 2609: [PL570] Control Panel - allow to levitate after a store to flash in DSP
- Bug 2610: [PL630] Control Panel - Modify the "clear F1" and "clear F2" labels by "Clear Level 1" and "Clear Level 2".
- Bug 2611: [PL634] Control Panel - Add the status of the customer status HIO
- Bug 2612: [PL671] Control Panel - Disable the disk space used
- Bug 2647: Configuration Panel - Reference Shift is not correctly processing values

### v1.3.1      Sept 23, 2016

- Feature 1299: Calibration & Service Panel - Support for 4 Axis Systems

### v1.3.0      July 22, 2016

- Feature 1084: Trending – FFT View for TSD files
- Feature 1104: Added Bearing Voltage Estimation real time channels to the Snapshot, Trending and Event Viewer tools
- Feature 1144: Added a R/W mode to the Configuration Viewer
- Feature 1159: [S2M] PL60: Configuration Panel – Configure Bearing Characteristics
- Feature 1171: [S2M] [S2M] PL650: Configuration Panel - Properly display the 1st or 2nd order bearing filter dialog
- Feature 1180: [S2M] PL639: Allow to save the SDR file and LR file directly. Possibility to open a SDR file or LR file recorded in the PC.
- Feature 1228: [S2M] PL574: Modify the labels of events for the Power Supply
- Feature 1230: [S2M] PL652: Control Panel - Display of harmonic rank
- Feature 1238: [S2M] PL660: Add new Enum to read the rank of the harmonic
- Bug 1817: Memory leak during reconnection process, when not able to connect

If you require technical support please contact us at the following:

Email: [magnetic.bearings@skf.com](mailto:magnetic.bearings@skf.com)

Phone: +1 403 232 9292

[www.skfmagneticbearings.com](http://www.skfmagneticbearings.com)

- Bug 2092: Trending – Cursor shouldn't be a waiting glass in the Triggered/Collected box
- Bug 2093: Trending - When channels have decimation, the duration time of the sample is wrong.
- Bug 2185: Trending – Icon is incorrect
- Bug 2215: Calibration Panel - Auto Centering does not update DAC\_OFFSET1 parameters
- Bug 2216: [S2M] PL648: Config Panel - Modify the label for the Elongation in the Configuration Hardware view
- Bug 2270: [S2M] PL652: Control Panel - Improve the display for the harmonics
- Bug 2286: [S2M] PL651: Event file in MBCSI are not downloading
- Bug 2307: Trending - Some channels at the end of the list cannot be displayed
- Bug 2269: Analyzer – Unable to open V6 files
- Bug 2310: Analyzer – Unable to open V7 files
- Bug 2311: Calibration Panel - The centering parameters are not updated into the centering Position Offset block of SPV
- Bug 2312: Event Viewer - Cannot open SDR when offline
- Bug 2061: Trending - Disconnect does not work (Unhandled Application Exception)
- Bug 2064: Parameter Loader - Missing User's Guide in Help menu

### v1.2.2 May 6, 2016

- Feature 1037: Analyzer - Opens several files in one shot
- Feature 1036: Analyzer - Export only direct transfer functions
- Bug 1946: Update to MBLicense v5.1.1 to fix the 'changing PCID' issue
- Bug 2040: Trending Tool - Y value not display in the cursor tool tiup when HHMMSS time format selected
- Bug 1939: Snapshots - SSD files are not scaling correctly
- Bug 2034: Snapshots - Saving Amplifier Current SSD causes an OutOfIndexArrayException
- Bug 1907: Snapshots - Label "Position Z1" rename to "Position Z"
- Bug 1942: Service Panel - Power time date format has hours and seconds swapped
- Bug 2039: Service Panel - Levitation counter not updating
- Bug 1961: Service Panel - Date Time Bug Fix
- Bug 2038: Analyzer - Multiple Selection not working
- Bug 1940: Analyzer - Avoid exporting empty transfer functions
- Bug 2036: PL625 - Configuration Panel - Some views are in error when not connected
- Bug 1972: PL622 - Control Panel - Display the Harmonics information from DSP Control Panel
- Bug 1971: PL621 - Configuration Panel - Manage the command for automatic auto batteries test
- Bug 1974: PL604 - Firmware Loader - SPV firmware load without having another panel opened
- Bug 1973: PL574 - Event Viewer - Events for PCS modified
- Bug 1868: Service Panel – Fixed access for license level permissions

### v1.2.1 February 12, 2016

- Bug 1868: Service Panel – Fixed access for license level permissions

### v1.2.0 February 5, 2016

#### Major Features:

- Feature 981: Configuration Viewer – Initial Release
- Feature 921: Parameter Loader – Addition of MBCSI files
- Feature 1006: Parameter Loader – SPV and DSP now Store to Flash when sending parameters
- Feature 975: Analyzer & Service Panel – Support for ONO export
- Feature 922: Service Panel – Added Touch and Go

If you require technical support please contact us at the following:

Email: [magnetic.bearings@skf.com](mailto:magnetic.bearings@skf.com)

Phone: +1 403 232 9292

[www.skfmagneticbearings.com](http://www.skfmagneticbearings.com)

#### Bugs & Smaller Features:

- Feature 1007: Calibration Tool - When choosing triangular distortion method, it is not possible to choose the shape between sine and triangular waveform
- Bug 1630: Orbits - API/Clearance Limits - Available for Currents and Requests
- Bug 1636: Calibration Tool - Error writing INI file
- Bug 1637: Configuration Panel - does not support 64-bit
- Bug 1726: Configuration Panel - Encrypted PEF not supported
- Bug 1749: Service Panel - Offsets not saved into permanent memory
- Bug 1752: Calibration - API Display Limits - incorrect
- Bug 1811: Configuration Viewer - Some sections missing
- Bug 1823: Configuration Panel - NTW files not working
- Bug 1834: Analyzer - Unable to display open loop and closed loop at the same time
- Bug 1836: PL606 - Configuration Panel - Bug fixed for the unbalance FSV
- Bug 1837: PL577 - Configuration Panel - Display the rotor status for all panels
- Bug 1838: PL517 - Add new event for the maintenance key
- Bug 1839: PL610 - Configuration Panel - Add Touch & Go for axial
- Bug 1840: PL609 - Configuration Panel - Add new DO management for rotor rotation in the Configure Hardware View
- Bug 1841: PL612 - Event Viewer - Add units in the bar description for Alarm Snapshot & MBCSI LF Trending
- Bug 1842: PL611 - Event Viewer - Save the MBCSI event log
- Bug 1843: PL611 - Event Viewer - Save the SDR files & Low Frequency files in text format
- Bug 1844: PL612 - Event Viewer - Display the magnitudes & the phases for the SDR & Low frequency data
- Bug 1859: Service Panel - Choosing template with sinewaveform, triangular waveform gets driven by DSP

If you require technical support please contact us at the following:

Email: [magnetic.bearings@skf.com](mailto:magnetic.bearings@skf.com)

Phone: +1 403 232 9292

[www.skfmagneticbearings.com](http://www.skfmagneticbearings.com)

## v1.1.0 December 16, 2015

- Bug 1096: Orbits – An exception occurred if the manual radius entry was too large
- Bug 1114: Firmware Loader – An exception occurred if no file was selected to send
- Bug 1115: Calibration Panel – An exception occurred if the step size entry was too large
- Bug 1646: Calibration Panel – Unable to auto-calibrate
- Bug 1692: E300V2 label in the status bar is in the wrong place
- Bug 1694: Configuration Panel – Exception when launched
- Bug 1712: Configuration Panel – Exception when sending the scaling factor
- Feature 902: Added build information to all output files
- Feature 988: Added Encryption to all MBScope files (encrypted files have a '#' appended)
- Feature 328: Added API display limits to the Snapshots, Orbits, Analyzer, and Calibration tools
- Feature 718: Moved all user files from "C:\Program Files\" to "C:\ProgramData\"
- Feature 930: Added a new Logging Options and Logging Export feature(Figure 1)
- Feature 931: Added a better UI for importing MDLs and PEFs (Figure 2)

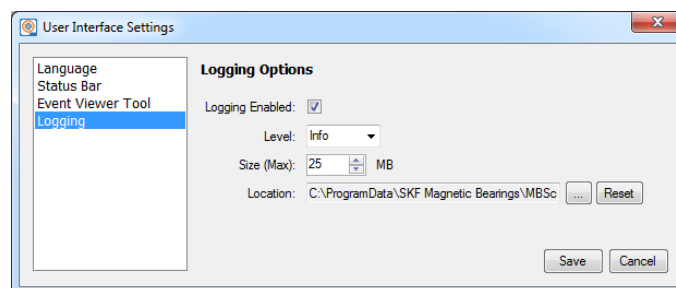


Figure 1 - Logging Options Feature (via the User Interface Settings)

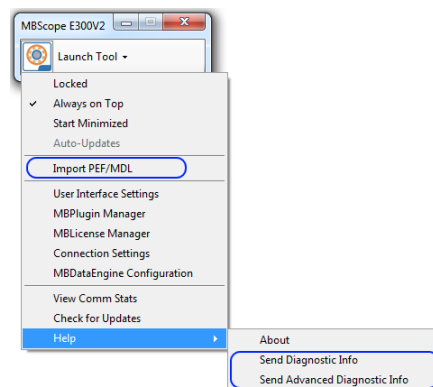


Figure 2 – Send diagnostic & logging information, and Import PEF/MDL features (via the Launcher)

If you require technical support please contact us at the following:

Email: [magnetic.bearings@skf.com](mailto:magnetic.bearings@skf.com)  
 Phone: +1 403 232 9292  
[www.skfmagneticbearings.com](http://www.skfmagneticbearings.com)



### **v1.0.7            November 12, 2015**

- Bug 1564: Configuration Panel – Fixed issues with data boxes not accepting and clearing data entered by user after sent to the controller
- Bug 1565: Firmware Loader – Fixed issue where the SPV image won't be sent to the controller
- Bug 1514: Service Panel – Fixed issue where a change in the output folder from the Transfer Functions Tab crashes the tool.
- Bug 1568: Service Panel – Fixed issue that does not allow calibration of Z axis when multiple axes are selected in template
- Bug 1573: Event Viewer – Improved the display for Hard/Soft landing counters
- Bug 1593: Control Panel – Added display for temperatures not available
- Bug 1594: Configuration Panel – Added dropping of shaft and writing to SPV during rotation and Improved the AO configuration display.

### **v1.0.6            September 25, 2015**

- Bug 1362: Installation – Changed 'Params' folder to 'Param'
- Bug 1339: Installation – Upgrading deleted the PEF folder
- Bug 1138: Snapshots – Fixed issues with horizontal scaling in spectrum view
- Bug 1304: Snapshots – Snapshots Start/Stop button has incorrect text when pressing 'Single'
- Bug 1248: Control Panel – Fixed exception when opening the monitoring panel
- Bug 1283: Calibration Tool – Fixed Store to Flash issues
- Feature 763: Event Viewer – Added a new event for 'Counter Reset'
- Feature 768: Event Viewer – Added a new event for 'Battery Unplugged'
- Feature 764: Event Viewer – Added a new event and alarm for 'Battery Life'
- Feature 765: Event Viewer – Improve display of the SPV SDR
- Feature 766: Event Viewer – Add a new tab to display LF data from MBCSI
- Feature 765: Event Viewer – Add a new tab to display the event saved in the MBCSI
- Feature: Upgraded the Math Calculation Library

### **v1.0.5            August 21, 2015**

- Bug 1284: Service Panel – Failed detection when switching axis
- Bug 1282: Service Panel – Fixed output file name for transfer function tab
- Bug 1300: Firmware Loader – Removed the requirement for admin privileges
- Feature 703: Installation – Addition of 'Params' folder in MBScope root directory

### **v1.0.4            July 15, 2015**

- Bug 1211: Analyzer Tool – Fixed channel naming in ANL file data header
- Bug 1213: Calibration Panel – Fixed the display of an error during some configurations
- Bug 1214: Service Panel – Fixed an error message that sometimes occurred at the end of a measurement with a template, and fixed the sometimes missing open loop display.
- Bug 1231: Event Viewer – Small operational fixes
  - Added battery unplug events
  - Added event for maintenance key timeout
  - Removed display of axis that are not available in the machine

If you require technical support please contact us at the following:

Email: [magnetic.bearings@skf.com](mailto:magnetic.bearings@skf.com)  
Phone: +1 403 232 9292  
[www.skfmagneticbearings.com](http://www.skfmagneticbearings.com)

### **v1.0.3      July 2, 2015**

- Bug 1197: Configuration Panel – Clear the Calibration Save after DSP Store to Flash
- Bug 1186: MBPlugin Manager Icon is incorrect
- Bug 1147: Misplaced text on the installer screen

### **v1.0.2      June 17, 2015**

- Bug 1141: Small operational fixes
  - Configuration Panel: Fixed the entry of detection threshold for SPV Overspeed
  - Configuration Panel: Delete temporary files after use
  - Firmware Loader: Fixed which file types are displayed when browsing for MBCSI files
- Bug 1146: MBPlugin Manager was missing from the Start Menu and Launcher

### **v1.0.1      June 5, 2015**

- Bug 1098: Memory leak during MBC reconnection process
- Bug 1106: Calibration Panel - Corrected the cross weight equation
- Bug 1109: Configuration Panel & Control Panel - Small operational fixes
- Bug 1111: Fixed project build issues

### **v1.0.0      May 29, 2015**

Baseline Release

If you require technical support please contact us at the following:

Email: [magnetic.bearings@skf.com](mailto:magnetic.bearings@skf.com)  
Phone: +1 403 232 9292  
[www.skfmagneticbearings.com](http://www.skfmagneticbearings.com)